

FIG. S-121T:

1000 WOG 1-PIECE STAINLESS STEEL BALL VALVE REDUCED PORT THREADED ENDS W/LOCKING LEVER HANDLE

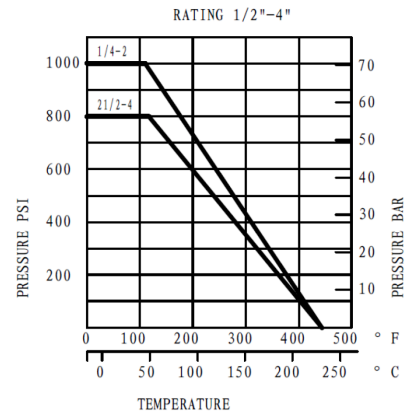
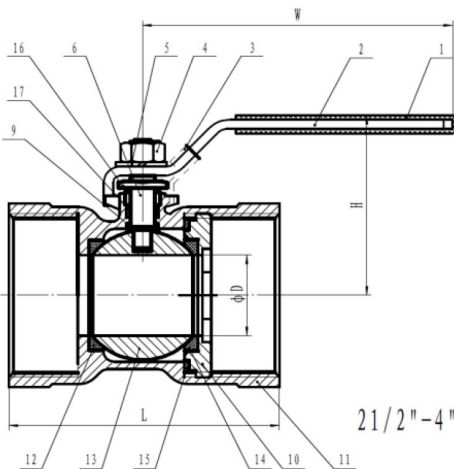
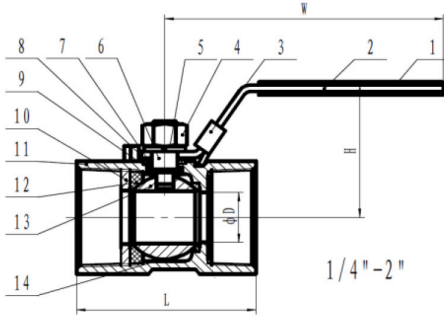
Features:

- For food & general chemical service application
- Adjustable stem packing
- Bottom-loaded blow-out proof stem
- Body & end caps quality investment casting
- Belleville washer assures leak-free seal on cool-down and as packing wears.
- Basic design complied with ANSI B16.34 &EN 12516-1.
- W.P.: ¼" - 2" 1000PSI, 2 ½" - 4" 800PSI
- Tested according to API 598



Materials:

No.	Part Name	Specification
1	Handle sleeve	PVC
2	Handle	AISI 304
3	Locking	AISI 304
4	Stem Nut	AISI 304
5	Spring Washer	AISI 304
6	Stem	AISI 316
7	Packing Ring	AISI 304
8	Stem Packing	PTFE
9	Thrust Washer	PTFE
10	Cap	CF8M
11	Body	CF8M
12	Seat (A)	PTFE
13	Ball	AISI 316
14	Ball Seat (B)	PTFE
15	Body seal	PTFE
16	Gland Nut	AISI 304
17	Stem Packing	PTFE



Dimension:

Size		ØD		L		H		W		S		Weight		
in	mm	in	mm	in	mm	in	mm	in	mm	in	mm	lbs	kgs	
¼	8	0.20	5	1.55	39.00	1.22	31	2.56	65	0.67	17	0.22	0.10	HEX
⅜	10	0.27	6.8	1.73	44.00	1.42	36	3.35	85	0.83	21	0.24	0.11	
½	15	0.36	9.2	2.22	56.50	1.61	41	3.74	95	0.98	25	0.42	0.19	
¾	20	0.49	12.5	2.32	59.00	1.73	44	3.74	95	1.26	32	0.60	0.27	
1	25	0.59	15	2.80	71.00	1.89	48	4.37	111	1.50	38	0.93	0.42	
1 ¼	32	0.78	20	3.07	78.00	2.13	54	4.37	111	1.93	49	1.46	0.66	
1 ½	40	0.98	25	3.27	83.00	2.56	65	5.32	135	2.09	53	1.79	0.81	
2	50	1.26	32	3.94	100.0	2.83	72	5.32	135	2.56	65	3.00	1.36	
2 ½	65	1.50	38	4.72	120.00	3.15	80	6.06	154	3.27	83			
3	80	1.97	50	5.51	140.00	3.94	100	7.52	191	3.86	98			OCT
4	100	2.52	64	6.69	170.00	5.08	129	9.69	246	5.00	127			